

## JLG 600 SERIES



- Choice of models with working heights from 20 m to 22 m \*
- Fast boom and drive speeds improve work productivity
- Multiple simultaneous boom functions get you to the job quicker
- Proportional controls achieve smoother movement for operator comfort
  - Excellent manoeuvrability for positioning of machine and platform
  - Handle the roughest of terrain with increased engine power

\* Model 600S & 600SJ - 20 m working height  
Model 660SJ - 22 m working height

For more details check the JLG Technical Specification Guide or ask your local JLG representative.



### Oscillating axle option for tough travel

Provides increased traction when travelling.



### Controls designed for ease of operation

Easier to operate when positioning and controlling movement.



### Articulating Jib\*

Allows for greater versatility when positioning the platform around obstacles.  
\* Models 600SJ and 660SJ.



### Diagnostic Ground Control Console

Console features three-dimensional decal plus diagnostic maintenance sensors.



### Low mount platform access

Step-in entry height and high strength railings provide operator both convenience and security.



### Greater serviceability

Improved access with an engine swing-out tray.

### JLGEUROPE

JLG Industries (Europe), A Division of JLG Industries, Inc.  
Kilmartin Place, Tannochside Park,  
Uddingston, G71 5PH, Scotland.  
Tel: 01698 811005  
Fax: 01698 811055

[www.jlg.com](http://www.jlg.com)



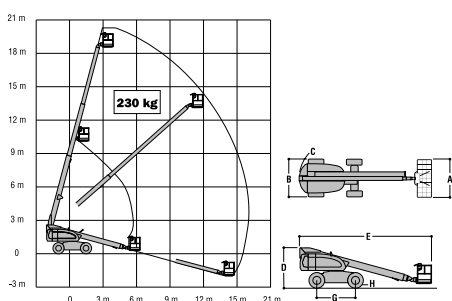
# 600 SERIES TELESCOPIC BOOM LIFTS

	600S	600SJ	660SJ
Platform Height	18.29 m	18.29 m	20.12 m
Horizontal Outreach	15.09 m	15.34 m	17.30 m
Swing (Continuous)	360°	360°	360°
Platform Capacity – Unrestricted	230 kg	230 kg	230 kg
Platform Rotator (Hydraulic)	160°	180°	180°
Jib – Overall Length	—	1.83 m	1.83 m
Jib - Range of articulation	—	130° (+70°/-60°)	130° (+70°/-60°)
A. Platform Size	0.91 m x 1.83 m	0.91 m x 1.83 m	0.91 m x 1.83 m
B. Overall Width	2.44 m	2.44 m	2.44 m
C. Tailswing (working condition)	1.14 m	1.14 m	1.14 m
D. Stowed Height	2.56 m	2.56 m	2.56 m
E. Overall Length	8.61 m	10.16 m	10.84 m
F. Stowed Length	8.61 m	9.55 m	10.31 m
G. Wheelbase	2.48 m	2.48 m	2.48 m
H. Ground Clearance	0.30 m	0.30 m	0.30 m
Gross Vehicle Weight*	10,800 kg	11,525 kg	13,115 kg
Maximum Ground Bearing Pressure	4.22 kg/cm <sup>2</sup>	4.36 kg/cm <sup>2</sup>	4.96 kg/cm <sup>2</sup>
Maximum Tyre Load	5,354 kg	5,626 kg	6,455 kg
Drive Speed 2WD	7.2 km/h	7.2 km/h	7.2 km/h
Drive Speed 4WD	6.4 km/h	6.4 km/h	6.4 km/h
Gradeability 2WD	30%	30%	30%
Gradeability 4WD	45%	45%	45%
Tyres	15 x 19.5 Foam Filled	15 x 19.5 Foam Filled	15 x 19.5 Foam Filled
Axle Oscillation (optional)	0.20 m	0.20 m	0.20 m
Turning Radius – Inside 2WS	3.66 m	3.66 m	3.66 m
Turning Radius – Inside 4WS	1.65 m	1.65 m	1.65 m
Turning Radius – Outside 2WS	5.41 m	5.41 m	5.41 m
Turning Radius – Outside 4WS	3.45 m	3.45 m	3.45 m
Diesel Engine	48.5 kW Deutz F4M1011E	48.5 kW Deutz F4M1011E	48.5 kW Deutz F4M1011E
Fuel Tank Capacity	147.6 L	147.6 L	147.6 L
Hydraulic Reservoir	117.3 L	117.3 L	117.3 L
Auxiliary Power	12V DC	12V DC	12V DC

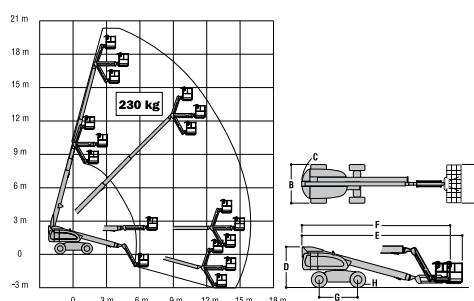
\*Certain options or country standards will increase weight.

Specifications may change to meet country standards or with the addition of optional equipment.

## JLG MODEL 600S



## JLG MODEL 600SJ



## JLG MODEL 660SJ

